

# PROCAB CONTRACTOR SERIES

For some specific applications pre-made HDMI cables are unsuitable. Procab solves this problem by introducing the "HDMI Contractor Series". This is the world's first system that allows HDMI cable assembly according to the requirements of your specific application, without any soldering, heat shrinking tubes or other complex operations.

The HDM24, HDM26 or HDM28, (p. 40) can be cut at the desired length. Afterwards, a 19-pin HDMI connector can be mounted on it.

## FEATURES

- High Speed with Ethernet
- Cable assembly in minutes
- Solderless
- Gold plated connectors
- 24 AWG and 26 AWG cables
- Up to 20 m 1080p HD video transfer



### HDM100 PRE-MADE OPEN ENDED CONTRACTOR CABLE



The Procab HDM100 cable is a pre-made contractor cable with one connector already attached, and separate connector included to attach to the other end. This way installing HDMI is even more easy.

Each bag contains a length of Procab HDM28/24-cable with one connector already attached, and one unattached connector (connector, cable holders & metal shell).

#### Available lengths:

**HDM28:** 4m, 6m.

**HDM26:** 8m.

**HDM24:** 10m, 15m, 20m

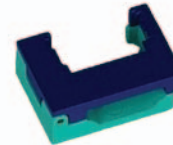
### CTV100 HDMI TOOLBOX



A special contractor toolbox is available for onsite assembly and testing. It contains everything needed to assemble custom HDMI cables: Crimping tool (HDM800), a cable tester (HDM900), and 20 connectors for assembly (HDM19).

The assembly of the connectors on the cable only takes a few minutes. Just insert the cables into the two cable holders and using one squeeze of the crimping tool the cable is ready to be used!

### HDM860/865 GUIDING JIG



Colour coded spare guiding jigs. plastic (HDM860) or metal (HDM865)

### HDM700 EMPTY CONTRACTOR TOOLBOX



Carrying case for Contractor series tools and equipment.

### HDM19 HDMI CONNECTOR



The HDM19 is the 19-pin connector which should be assembled to the cable ends.

The contact points are gold plated, and the body is made of sturdy die-cast material in a mat finish.

### HDM800 CRIMPING TOOL



The HDM800 is a crimping tool which is especially designed to compress the HDMI Cable to the connector.

### HDM900 CABLE TESTER



The HDM900 is a portable cable tester consisting of a transmitter and receiver end. It is used to check if the installation has been completed successfully. It has two operation modes, continuous and sweep.

Video

BULK CABLES

